



16918 Edwards Rd. • Cerritos • California • 90703

tel. 562.407.2186 • fax. 562.802.7706

[www.hjchelmets.com](http://www.hjchelmets.com)

If you have any questions, please e-mail us at: [info@hjchelmets.com](mailto:info@hjchelmets.com)

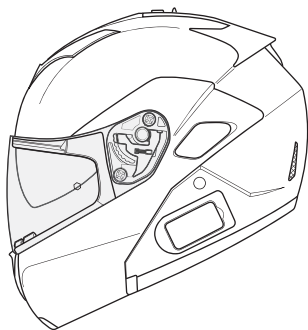


# SY-MAX III

## OWNER'S MANUAL

### **WARNING**

For your safety, it is important that you completely read the owner's manual and all warning labels.



## SY-MAX III

- **Advanced Fiberglass Shell with Adjustable Polycarbonate Chin bar:** Lightweight system, superior fit and comfort using advanced CAD technology.
- **One-touch Integrated Sunshield:** Three positions for sunshield sliding lever which is adjustable, smoke tinted Sunshield deploys quickly and easily
- **Optically superior Pinlock®-prepared Faceshield:** New 3D design, an anti-scratch coating and is prepared for the ultimate anti-fog Pinlock insert.
- **Single-button Chinbar/Faceshield Release:** Open with one hand even with gloves on.
- **SilverCool™ Interior:** Moisture-wicking and odor-free interior with advanced silver anti-bacterial fabric. Crown and cheek pads are removable and washable.
- **Ready for Bluetooth communication:** Built in recesses for the ChatterBox™ and speakers.

DOT Approved  
SIZES: XS-XXL

Important Safety Information.....	3
Selecting the Right Helmet.....	3-4
Specifications.....	4
Using Your Helmet Correctly.....	5-6
Inspect Your Helmet .....	5
Fasten the Retention System .....	5-6
Maintaining Your Helmet Correctly .....	6-12
Shell Cleaning .....	6
Interior Cleaning .....	6
Vent Cleaning .....	6
Shield Removal.....	7
Shield Installation.....	7
Cheek Pad Removal.....	7
Cheek Pad Installation.....	8
Crown Pad Removal.....	8
Crown Pad Installation.....	9
Sunshield Operation .....	9
Sunshield Removal .....	10
Sunshield Installation .....	10
Opening Chin Bar.....	11
Closing Chin Bar.....	11
Replacement Parts .....	11
Helmet Modifications .....	12
Storing Your Helmet Correctly .....	12
Helmet Replacement.....	12
Warranty .....	13

## Important Safety Information

### WARNING

The instructions in this manual are designed to help you select the right helmet, wear it properly, take care of it, and know when to replace it. Failure to follow these instructions may increase your risk of serious injury or death in an accident.

In order to get the most protection possible from your helmet, you should always do the following:

- Wear your helmet when you ride;
- Handle your helmet carefully to avoid accidental damage; and
- Ride safely – do not take risks because you are wearing a helmet.

Although your HJC helmet is designed to reduce or prevent some injuries when worn, no helmet can protect you from all possible or foreseeable impacts. For example, your helmet cannot protect you from spinal or neck injuries. In addition, there is no guarantee that your helmet will prevent injuries to the area of your head that is covered.

## Selecting the Right Helmet

**WARNING** Never buy a used helmet or borrow someone else's helmet. Over time the protective foam in helmets will adjust to the contours of a user's head. A used or borrowed helmet may not offer as much protection as a new helmet.

**WARNING** Wearing the wrong size helmet can increase your risk of serious injury or death in an accident. A helmet that is too large for your head may be dislodged or knocked off in an accident. To select the right size helmet for your head, follow these instructions:

1. **Measure your head.** Wrap a tape measure around your head about one inch (2.5 cm) above your eyebrows.
2. **Use the sizing chart** to select the helmet size that corresponds most closely to your head measurement. If your head size falls between two helmet sizes, try on the larger helmet first and then the smaller size.

### Sizing Chart

	XS	S	M	L	XL	XXL
Hat Size	6 5/8 - 6 3/4	6 7/8 - 7	7 1/8 - 7 1/4	7 3/8 - 7 1/2	7 5/8 - 7 3/4	7 7/8 - 8
Centimeter	53-54	55-56	57-58	59-60	61-62	63-64
Inch	20 7/8 - 21 1/4	21 5/8 - 22	22 1/2 - 22 7/8	23 1/4 - 23 5/8	24 - 24 3/8	24 3/4 - 25 1/4

3. **Try on the helmet** by grasping both chin straps to pull the helmet completely onto your head, ensuring that the top of your head is in contact with the top of the helmet interior.

4. **Check for a proper fit.** To make sure your helmet is the right size, check that:

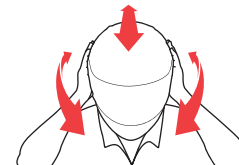
- The helmet inner lining fits snugly around your head.
  - The top pad presses firmly on your head.
  - The cheek pads contact your cheeks.
  - There is no space around your brow under the inner lining.
- Test this by trying to insert your fingers.

If the helmet does not fit snugly, try on a smaller size.

5. **Check your field of vision when trying on a helmet.** Some helmets may obstruct or block your vision when looking left, right, up, or down.

**WARNING** Always make sure you can see well enough to safely operate your motorcycle.

6. **Test the helmet fit** by placing your hands on each side of the helmet. While holding your head as motionless as possible, try rotating your helmet from left to right then up and down. If you can feel the helmet padding sliding on your head, it is too big, try a size smaller. You should feel the helmet move the skin on your head and face as you try to move the helmet.

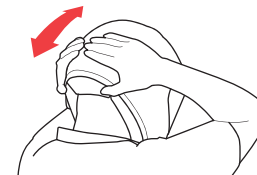


\* The SY-MAX III was designed to be used in the closed chin bar position, thus be sure all helmet "fitting" is done while chin bar is in the closed and locked position.

7. **Fasten the retention system (chin strap)** as tight as possible under your jaw without causing pain. There must be no slack in the strap, and the strap must be tight up against your jaw. See page 5-6.

8. **Test the retention system (chin strap)**

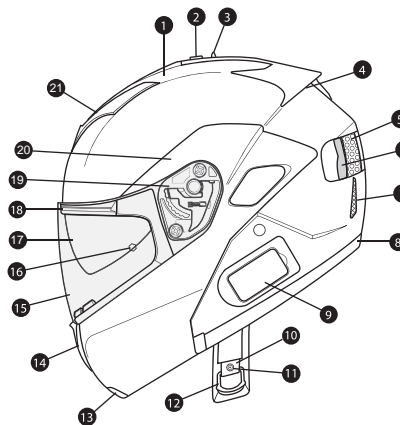
- Put your hands on the back of the helmet and try to push the helmet off by rotating it forward.
- Put your hands on the front of the helmet above your forehead (or on the chin guard) and try to push the helmet off by rotating backward.



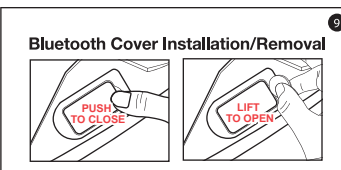
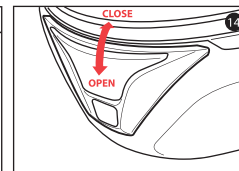
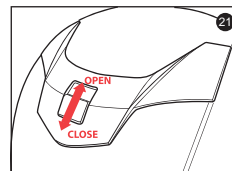
**WARNING** If helmet comes off, try another size or another model or brand.

Repeat steps 3 through 8 until you find a helmet that fits your head snugly and securely.

## Specifications



1. Outer Shell
2. Sunshield Release Button
3. Sunshield Lever
4. Rear Venturi Exhausts
5. Impact Absorbent Liner
6. Comfort Liner
7. Lower Rear Exhaust Venturi Vents
8. Rubber Edge Trim
9. Bluetooth Cover
10. Chin Strap
11. Chin Strap Snap
12. Double "D" ring
13. Chin Bar Lever
14. Front Chin Vent
15. Tool-less Shield
16. Pinlock® Pins
17. Sunshield
18. Eyeport Gasket
19. Shield Ratchet
20. Modular Chin Bar
21. Top Front Vent



## Using Your Helmet Correctly

**WARNING** To reduce the risk of serious injury or death and to help prevent damage to your helmet:

- **Never adjust your helmet accessories while riding** – Only make helmet adjustments when stopped.
- **Never drop your helmet** – Dropping your helmet may crack the shell or damage the protective foam. The damage may not be visible. Your helmet is only designed for ONE impact. Refer to "Helmet Replacement" (p.12) for more information on what to do after helmet has been dropped.
- **Never wear anything between your head and your helmet** – This may reduce the effectiveness of your helmet.
- **Never hang or hook your helmet on anything including mirror stalks or sissy bars** – Doing so may cause damage to the helmet protective foam or liner.
- **Never use insect repellent on or around your helmet** – Insect repellent may damage your helmet's shield, shell, protective foam, or other components.
- **Never expose helmet to gasoline or gasoline fumes** – Gasoline may damage your helmet's shield, shell, protective foam, or other components.
- **Never use a dark or tinted face shield at night or in low visibility conditions.**
- **Never ride with the modular chin bar in the open position.**
- If you have any questions on what other substances may damage your helmet, please contact us.
- **Always wear eye protection** – If you are not using a helmet with a face shield, always wear eye protection when riding. Always lock your face shield in place when you are riding.
- **Always be alert for sounds** – Your helmet may impair your hearing. However, your helmet is not a form of hearing protection.
- **Always store your helmet in its helmet bag** when not in use to help reduce accidental surface damage.

**WARNING** To reduce the risk of serious injury or death, always use your helmet correctly.

### Inspect your helmet

To ensure that your helmet is in the best condition to maximize your protection, always inspect your helmet for damage before riding:

- **Check the shield and shield ratchet** – re-tighten shield ratchet screws if necessary. Be sure not to over-tighten any screws. Plastic base plate screws can break and plastic screws can strip the screw sleeves if over-tightened.
- **Check for helmet damage.** If your helmet is damaged or cracked, stop using it immediately. See "Helmet Replacement" (p.12) section for further information. If your helmet has been dropped, you may not be able to see the damage.
- **Check for worn or damaged parts.** Plastic components may wear out over time. If you find worn or damaged parts, replace them or purchase a new helmet. See "Replacement Parts" (p.11) for information on parts replacement.

**WARNING** If parts fall off while riding, your vision may be blocked which could cause an accident.

- **Check the retention system (chin strap) for damage.** If it is frayed or ripped, replace the helmet.
- **Check that all pads are in place.** Both of the cheek pads and the crown pads must be in place.

### Check Your Face Shield

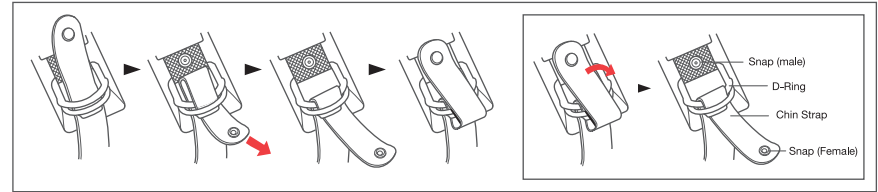
If your face shield is scratched or damaged it may reduce the visibility-replace if necessary. Always make sure you can see well enough to safely operate your motorcycle.

### Fasten the Retention System

Fasten the retention system (chin strap) as tight as possible under your jaw without causing pain. There must be no slack in the strap, and the strap must be snug up against your jaw. If the retention system is not tight, your helmet may become dislodged or knocked off in an accident.

**WARNING** Do not rely on the snap to secure the helmet. The snap is provided only to prevent the strap from flapping in the air. Fasten the retention system only in the following manner:

### Double "D" Ring



## Maintaining Your Helmet Correctly

### Shell Cleaning

**WARNING** Only use approved methods to clean the helmet. Using other unapproved chemicals or methods may damage the helmet shell or lining. A damaged helmet may increase your risk of serious injury or death in an accident.

**Glossy Finish.** HJC recommends cleaning your helmet with products designed for automotive cleaning and polishing. All HJC helmets are finished with an automotive type base coat/clear coat finish. Rubbing compounds can be used for deep cleaning to remove many scratches and scuffs. Follow the product's instructions diligently. Over polishing with rubbing compounds can cause light abrasions which may dull the finish of your helmet. Stickers and decals will leave adhesive residue when removed. To remove the adhesive residue, use alcohol swabs. Be certain to immediately wipe away the excess liquid and clean the area with soap and water once the adhesive residue is removed. Do not use excessive pressure while rubbing when attempting to remove the adhesive residue, instead use multiple light treatments.

**Non-Glossy Finish.** For our flat finish (non-glossy) helmets, we recommend using warm water and mild soap. Use multiple treatments for heavier dirt. Do not use excessive pressure or rubbing compounds while cleaning the surface as a "glossy" effect could be created, ruining the flat finish appearance.

### Interior Cleaning

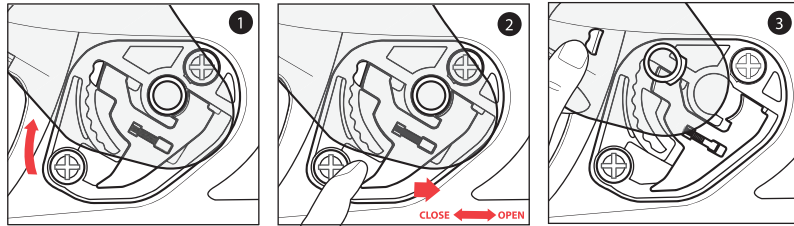
Although we recommend changing a helmet every 3 to 5 years, the accumulation of sweat, humidity, and dirt can deteriorate the fabric and stitching and this may cause odor. To wash HJC removable pads, HJC recommends regular machine washing and air drying. For non-removable interiors, HJC recommends using bacteria and mildew eliminating products such as "Helmet Fresh".

### Vent Cleaning

Dirt and debris can find its way into the venting of your HJC helmet. Compressed air cans used for cleaning computer keyboards may be used to blow the debris from the ventilation system. It is recommended that you remove any removable pads before doing this process.

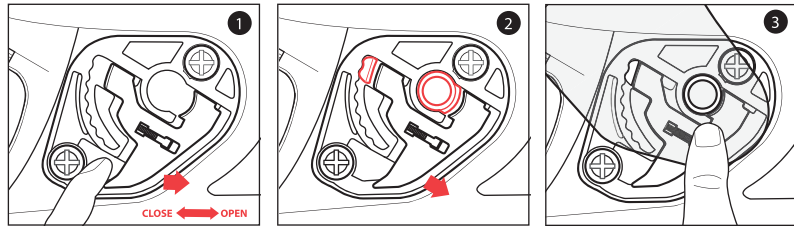
## Shield Removal

1. Open the shield to its maximum open position. Do not force.
2. Move the handle-locker to the open position.
3. The shield will be automatically released out of the base ratchet mechanism.



## Shield Installation

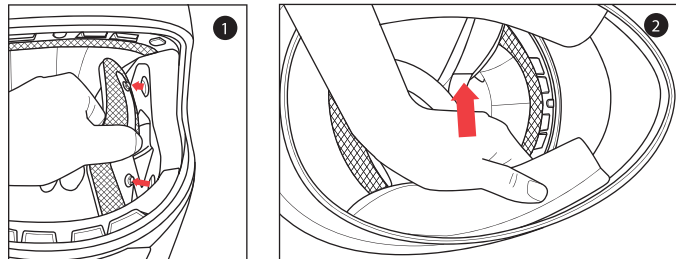
1. Ensure that the handle-locker is in the open position.
2. Align and insert the top of the shield guide into the plate-gear guide.
3. With the guides properly aligned, press the lower section of the shield into the Plate-Gear mechanism. The locking tab should pop into position, locking the shield into place.



## Cheek Pad Removal

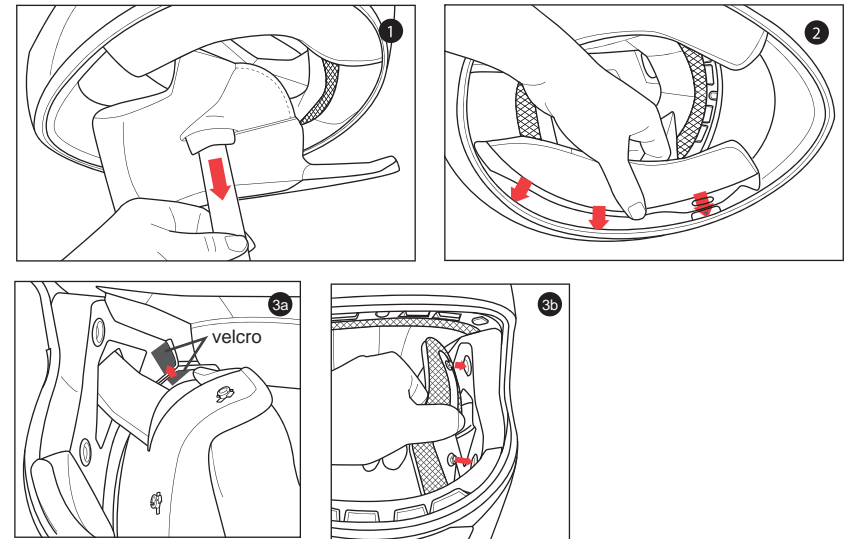
There are 2 snaps and 1 velcro holding the cheek pad in place.

1. Gently pry the cheek pad away from the interior, releasing the snaps and velcro.
2. Grasp the cheek pad near its center and gently pull it free from the chin strap.



## Cheek Pad Installation

1. Feed the chin strap through the opening in the cheek pad.
2. Align and fully slide the cheek pad plastic plate between shell and EPS.
3. After attaching the velcro, align two cheek pad snaps and press two snaps together.

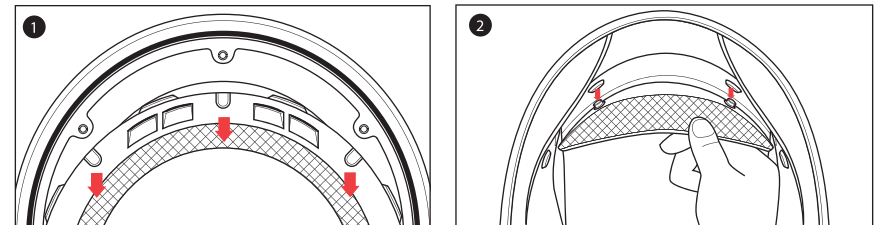


**WARNING** Always check to make sure that the crown pad is in place, before using the helmet. A helmet with missing or improperly installed pad may increase your risk of serious injury or death in an accident.

## Crown Pad Removal

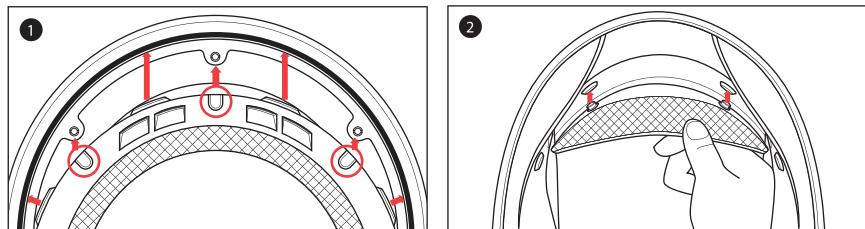
There are 3 snaps / plastic sleeves that hold the front of the crown pad in place and 2 snaps at the rear.

1. Grasp the crown pad fabric as close as possible to its plastic base and pull/pry away from the helmet. Notice how the crown pad plastic section aligns with the shell plastic sleeve. This will help orient you with the reinstallation.
2. Repeat same at rear.



## Crown Pad Installation

1. Align and push the crown pad plastic sleeves into the slot located on the crown pad's plastic base followed by pressing the snap into place, repeat for each snap.
2. Align and snap the two rear snaps into place.



### ⚠ WARNING

Try not to operate the sunshield mechanism while riding as this may impair your vision and may lead to an accident unless it is necessary and may be done safely.

DO NOT pull on the sunshield when it is already down. The sunshield may be ejected and this will increase the risk of serious injury or death in the event of an accident.

DO NOT attempt to adjust the sunshield with your hands. Always use the sunshield lever and the sunshield release button located at the top of the helmet.

DO NOT use sunshield at night time.

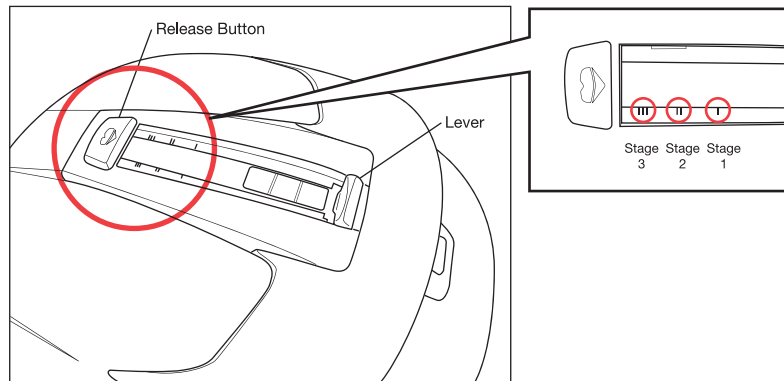
## Sunshield Operation

There are three positions for the sunshield sliding lever.

**Stage 1—Standard position:** works best for leaned forward riding position-(sportbikes) and when more nose clearance is desired.

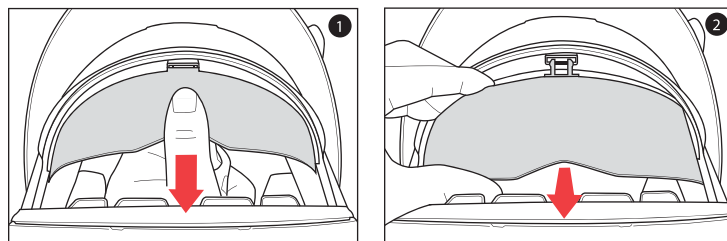
**Stage 2—Lower position:** works best for more upright riding position (cruisers and touring bikes).

**Stage 3—Lowest position:** Used primarily for sunshield removal and replacement. Release button must be held down to get to Stage 3.



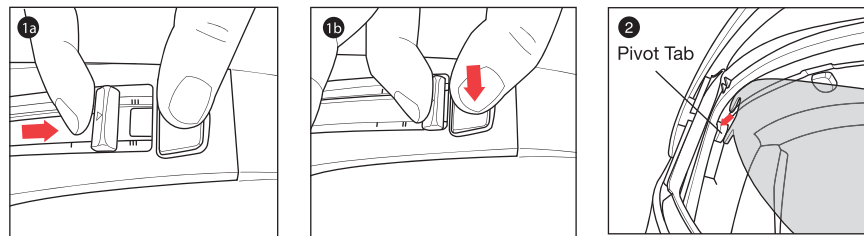
## Sunshield Removal

1. Grasp and pull the center of the sunshield by reaching inside the helmet through the bottom opening.
2. With the center portion of the sunshield released from its mount, pull the sunshield completely free from the helmet through the eye port.

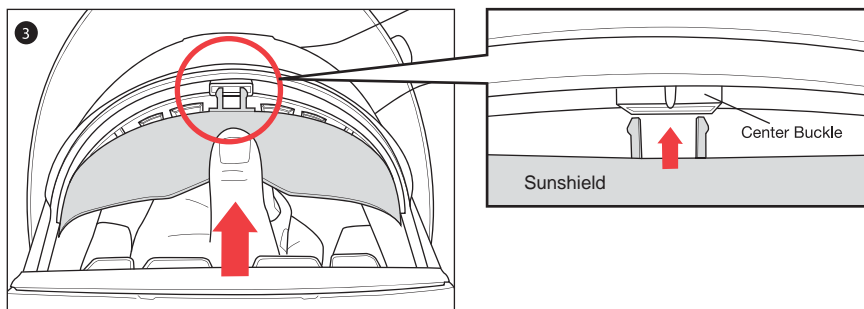


## Sunshield Installation

1. While holding up the sunshield lever at the stage 3 then push down the sunshield release button. This will push out the receiver.
2. Push each side into place, aligned with the pivot tabs.
3. While holding down the sunshield release button with the sunshield lever at the stage 3, use other hand to buckle up the center portion of the sunshield.



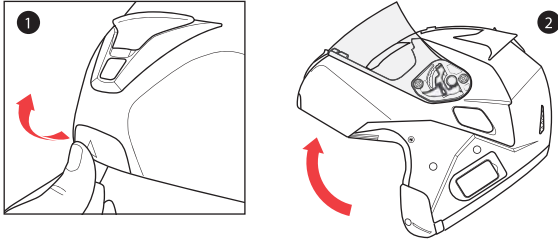
\* Make sure tabs & center buckle are secure in order for Sunshield to function properly.





## Opening Chin Bar

1. To open the chin bar, simply pull the lever forward and push the entire chin bar upward.
2. The chin bar is in the full open position when you hear "click" sound.

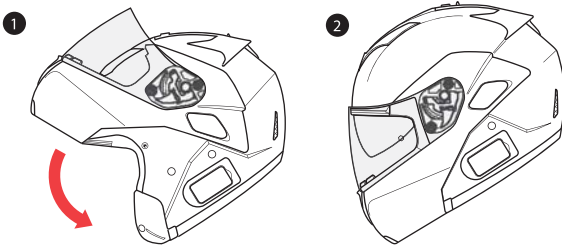


**⚠WARNING** Lower and lock before you leave: Never ride with the chin bar in the raised position. Please use care when opening or closing the chin bar as it may scratch the helmet. Damage caused by this is not subject to manufacturer's warranty.

## Closing Chin Bar

**⚠WARNING** The chin bar must be kept closed and locked while riding.

Pull the chin bar downward to completely cover your face and chin. Listen for "Click" sound to ensure that the chin bar has locked into its full closed position.



## Replacement Parts

**⚠WARNING** Use of replacement parts not manufactured by HJC may increase your risk of serious injury or death in an accident. Only use HJC parts that are specifically designed to work with this helmet.

## Do Not Modify Your Helmet

Your HJC helmet is designed to meet DOT standard.

Contact HJC America for more information about the DOT standard.

Modifying your helmet may increase your risk of serious injury or death in an accident.

Do not modify your HJC helmet. Modifications include the following:

- drilling holes;
- cutting shell, liner, or strap;
- modifying the retention system, including adding a chin cup;
- removing parts;
- painting; and
- attaching accessories that are not manufactured by HJC for this helmet.

If you have questions about modifications, please contact HJC America. See back cover for contact information.

## Storing Your Helmet Correctly

**⚠WARNING** An improperly stored helmet can become damaged and may increase your risk of serious injury or death in an accident. You should:

- Store helmet in a cool and dry place,
- Keep helmet away from pets and other animals,
- Keep helmet away from heat in excess of 122°F and do not set on or near hot surfaces.

## Helmet Replacement

**⚠WARNING** Although your HJC Helmet is constructed with the best materials available to offer a long-lasting product, it will eventually need to be replaced. Immediately replace your helmet if:

- **It has suffered an impact.** Your helmet is only designed for ONE impact. An impact may fracture the outer shell or compress the impact absorbing liner. You may not be able to detect this damage. Any impact in a crash or a drop from as low as 4 feet is enough to damage your helmet.
- **The shell, lining, or retention system is damaged.** The helmet shell, the impact absorbing lining, and the retention system must be in good condition to provide you with the most protection.

Even if your helmet has not been damaged, it needs to be replaced every 3 to 5 years depending on how much you use it. Over time, UV rays and adhesive and component aging will damage your helmet. Wearing a damaged helmet may increase your risk of serious injury or death in an accident.

If you are unsure if you need to replace your helmet, contact HJC America before using your helmet again.

## Helmet Disposal

**⚠WARNING** If you buy a new helmet, destroy the old one to ensure it cannot be reused. Do not sell or give away your old helmet, even if it has not been damaged. Over time the protective foam in the helmet will adjust to the contours of your head. If someone else uses this helmet it will not provide them with as much protection.

## **Warranty**

---

HJC hereby extends a limited warranty to the purchaser of a HJC helmet that the helmet is free of defects in materials and workmanship.

### **Coverage**

This warranty is applicable to manufacturer's defects only and is good up to three years from the date of purchase. It does not apply to any problems arising out of wearer's misuse, negligence, modifications, accidents, etc.

### **Disclaimer**

Any warranty of merchantability and any implied warranty are hereby expressly disclaimed. In addition, HJC shall not be liable for any consequential damages.

### **Procedure**

In order to receive warranty, please take your helmet, your receipt showing the date of purchase, and a brief memo that includes a description of the problem, your name, and phone number to the authorized HJC dealer from which you purchased your helmet.

## **MEMO**

---